

Don't Let Flies Significantly Weaken Your Results.

Using ClariFly® Top-Dress is simple. As a feed additive, it is simply incorporated into an animal's feed, and that is all the work you have to do to help prevent flies. Leave it and forget it. Spend less time on fly control and more time clearing space on your wall for that top prize.

To get ClariFly® Feed Through Larvicide in your feed mix, contact your micro ingredient supplier or local feed dealer.



BAITS



TRAPS



POUR-ONS/SPRAYS



SPECIALTY

Make ClariFly® Top-Dress Part of Your Fly Control Strategy

The active ingredient in ClariFly® Top-Dress takes care of the labeled flies that impact your animals. It passes through the digestive system, and resides in fresh manure, where flies lay their eggs. The mode of action in the active ingredient prevents house flies, stable flies, face flies and horn flies from developing into adults by interrupting their life cycles.

With ClariFly® Top-Dress, you get cost-effective fly control that requires very minimal additional work and effort. ClariFly® Top-Dress is approved for beef and dairy cattle, swine, horses, sheep and goats, and there is no residual in the animal.



OUR BRANDS



For more information, or help starting an IPM program, call **1.800.347.8272** or visit **CentralFlyControl.com**.

Always read and follow label directions. Aviator, ClariFly, ClariFly Larvicide with design, Cattle Armor, Cyanarox, Extinguish, Inhibidor, PBO-8, Pre-Strike, QuikStrike, Starbar with design and Starbar are registered trademarks of Wellmark International. Bite Free, Captivator, EZ Trap, FlyRelief, Fly Stik, Fly Terminator and Trap 'N Toss are trademarks of Farnam Companies, Inc. The red to yellow gradation is a registered trademark of Central Garden & Pet Company. ©2024 Wellmark International. FR 24-010



Fly Control that Works as Hard as You Do



Fight the Flies that Irritate Your Show Animals



THE HOUSE FLY

House flies have been implicated in the transmission of 65 disease organisms with populations that can burst out of control in a short period of time.



THE STABLE FLY

The stable fly has one of the most painful bites of any bloodsucking insect and feeds mainly on the legs and flanks of show animals.



THE HORN FLY

Horn flies are bloodsucking parasites found clustered on the backs of cattle. They are known to take up to 40 blood meals per day, leading to reduced weight gain, lower feed efficiency, and decreased milk yields.

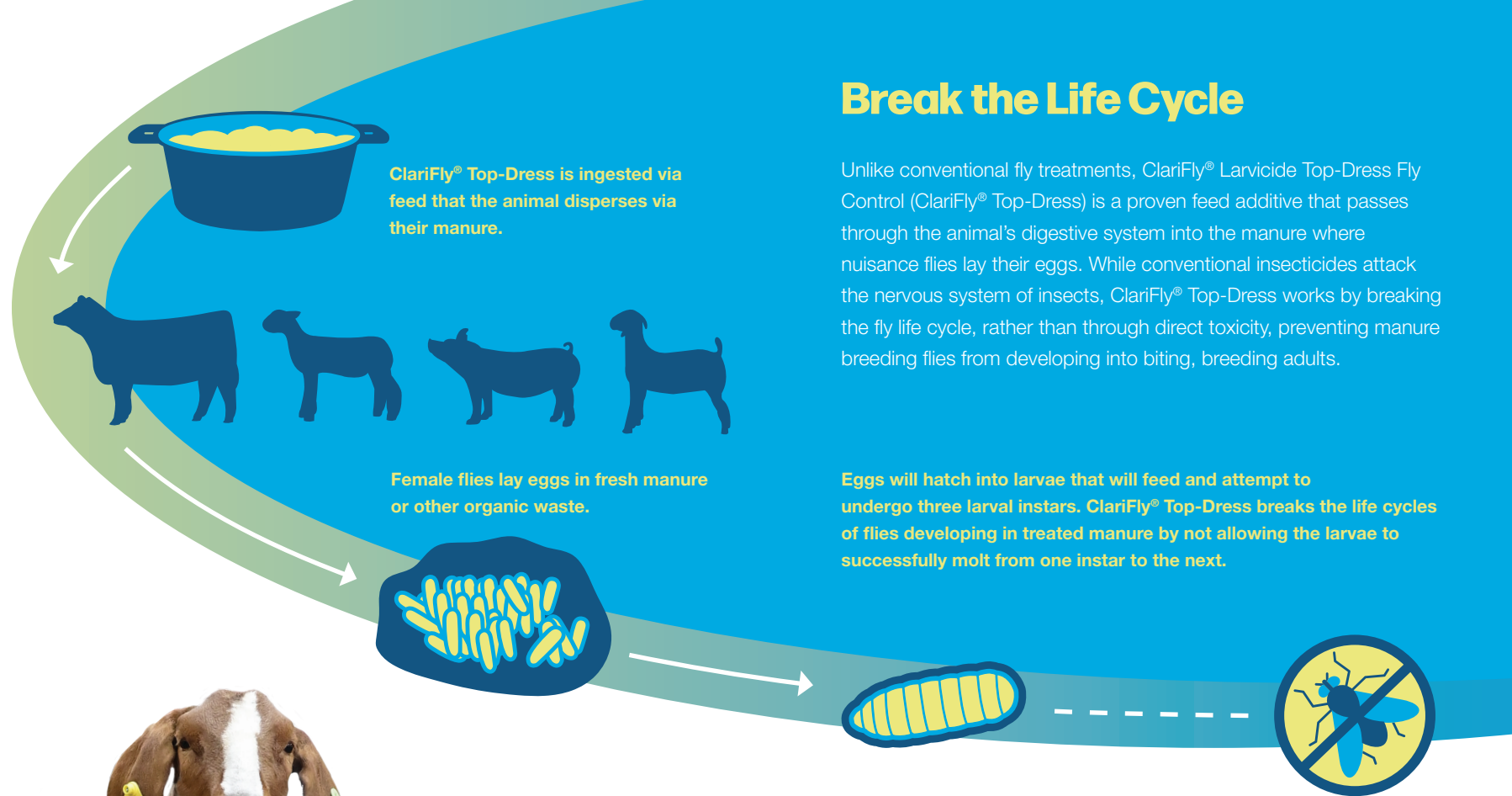


THE FACE FLY

Named after where it likes to congregate, the face fly feeds on secretions around the eyes, nose and mouth of cattle and can carry infection-causing bacteria, including bovine pink eye, to the animal. This pest develops in fresh, undisturbed manure.

The Trouble with Flies

Flies are much more than a nuisance. They are known to spread a number of serious diseases that can directly impact animal health. The presence of swarming, biting flies can cause skin lesions, hair loss and cause your animals to go off their feed, preventing them from gaining weight and reaching top production, all while providing uncomfortable living conditions.



Break the Life Cycle

Unlike conventional fly treatments, ClariFly® Larvicide Top-Dress Fly Control (ClariFly® Top-Dress) is a proven feed additive that passes through the animal's digestive system into the manure where nuisance flies lay their eggs. While conventional insecticides attack the nervous system of insects, ClariFly® Top-Dress works by breaking the fly life cycle, rather than through direct toxicity, preventing manure breeding flies from developing into biting, breeding adults.

Eggs will hatch into larvae that will feed and attempt to undergo three larval instars. ClariFly® Top-Dress breaks the life cycles of flies developing in treated manure by not allowing the larvae to successfully molt from one instar to the next.



Integrated Pest Management Practices

Everyone who raises animals for show — particularly 4H and FFA participants — should understand that fly management programs need to be proactive. ClariFly® Top-Dress is effective as part of an Integrated Pest Management (IPM) program. Practicing good sanitation, maintaining building repairs and strategically utilizing baits, traps and sprays such as those in the Starbar® line of products, along with ClariFly® Top-Dress, can significantly reduce fly populations. Start ClariFly® Top-Dress in your show animals' feed early in the spring before flies begin to appear. Continue it through the summer and into the fall, until cold weather reduces or ends fly activity.